




2177-31 BEG SA - Ehden Parc, Bussigny

2177-31 | ABA | P3B | MUL | LOC | 0624 | A
Immeuble Parc 3B
Appartement N°203

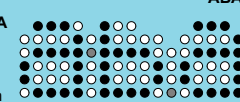
Phase: Location

Ech: 1 : 100 Date: 27.04.2023 Dess: ACh Format: A3 Niv. ±0.00 = alt. 430.40m

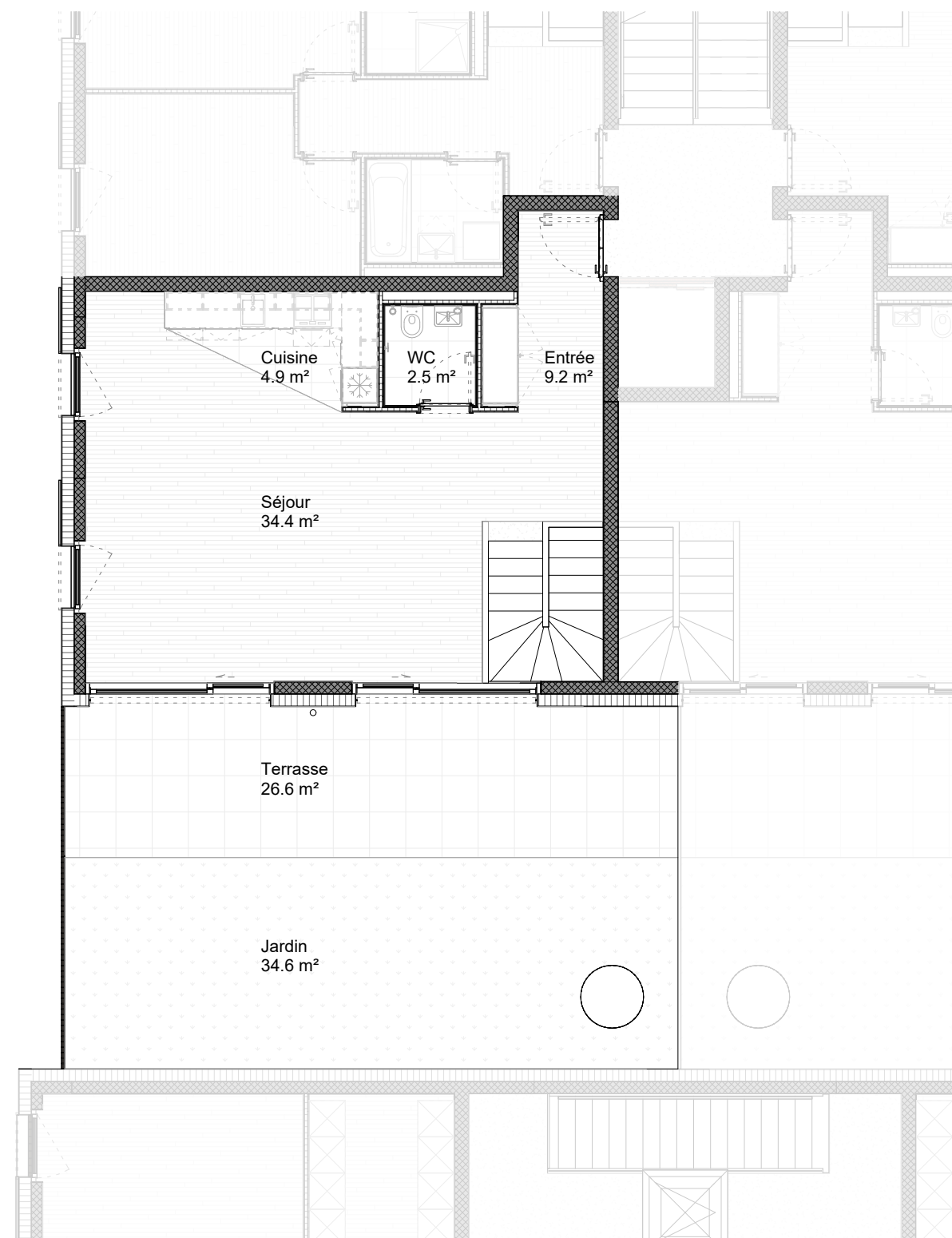
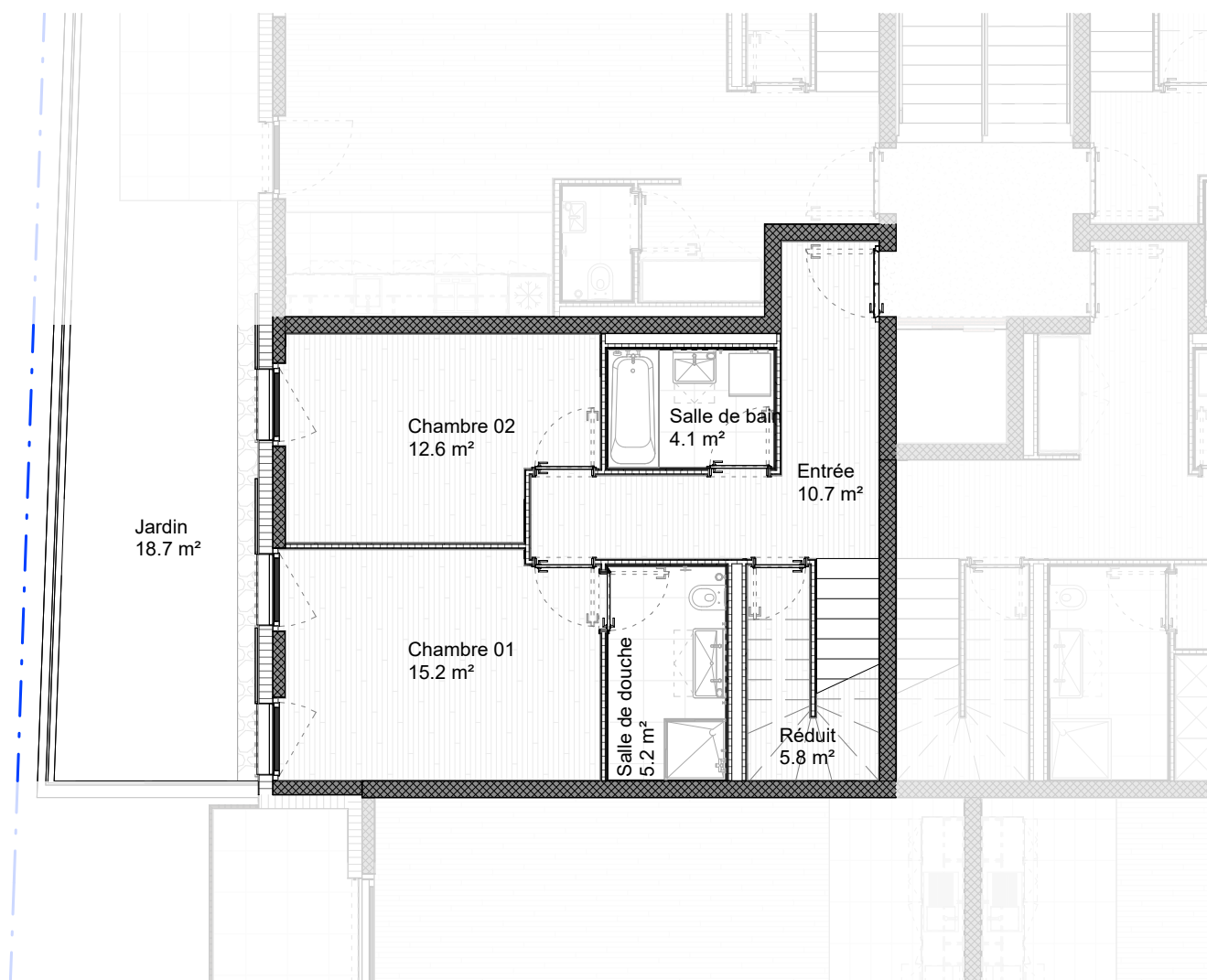
Maitre de l'ouvrage
BEG SA Entreprise Générale
Rue de Veyrot 2
1217 Meyrin GE
022 860 82 22
contact@begsa-eg.ch



Architecte
ABA PARTENAIRES SA
Av. de Rumine 20
1005 Lausanne
021 721 26 26
info@aba-partenaires.ch



I:\2177-31 BEG SA - Ehden Parc Bussigny, construction 2 immeubles\T-Technique\T5-Exécution\1-RVT\2177-31 - ABA - P3 - _rvt



| Pièce | Surface |
|-----------------|----------|
| Cave | 4.4 m² |
| | 4.4 m² |
| Chambre 01 | 15.2 m² |
| Chambre 02 | 12.6 m² |
| Cuisine | 4.9 m² |
| Entrée | 10.7 m² |
| Entrée | 9.2 m² |
| Réduit | 5.8 m² |
| Salle de bain | 4.1 m² |
| Salle de douche | 5.2 m² |
| Séjour | 34.4 m² |
| WC | 2.5 m² |
| | 104.6 m² |
| Jardin | 34.6 m² |
| Terrasse | 26.6 m² |
| | 61.2 m² |

